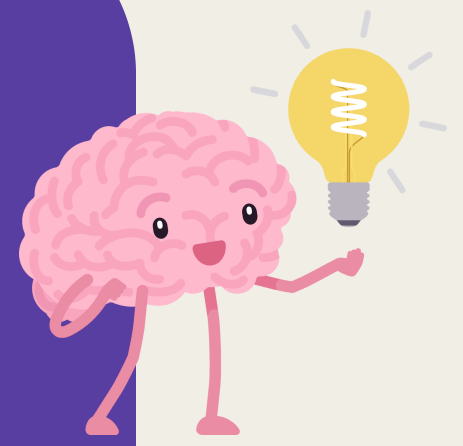


# RESEARCH PARTICIPANTS WANTED FOR INTERVIEWS

Exploring how people with **dementia or mild cognitive impairment** experience **stigma**, including its **impact** on daily life, social interactions, and support.



## PARTICIPATION CRITERIA

- Have received a **diagnosis of dementia or mild cognitive impairment (MCI)**.
- **Be able to provide informed consent themselves.**



## WHAT'S INVOLVED ?

- Approx. 1 hour of interview with option to take part **online or in person at the University of Leeds.**
- Going through procedures and opportunity to ask questions
- Consent form
- Interview and debrief



**All participants will be entered into a prize draw to win a £50 voucher**

**For more information please contact Devshri Trailokya on email: [mfqk0923@leeds.ac.uk](mailto:mfqk0923@leeds.ac.uk)**

This study has received ethical approval from the School of Psychology Research Ethics Committee at the University of Leeds on 29th May 2026, Reference #: SoPREC 4275  
Student: Devshri Trailokya . Email: [mfqk0923@leeds.ac.uk](mailto:mfqk0923@leeds.ac.uk)  
Academic Lead: Dr Holly Brown. Email: [H.D.Brown@leeds.ac.uk](mailto:H.D.Brown@leeds.ac.uk)

